

Enhance your guest experience

Keep your business connected to the internet with fast and highly secure access with **AT&T's Networking Solutions**

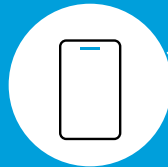
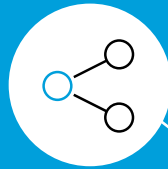
AT&T IP Flexible Reach SIP trunking delivers potential total cost benefits through the consolidation of voice and data: one provider, single transport, and management options

Utilize a suite of **AI and IoT tools** to help ensure guests receive a personalized experience and that your operations are running efficiently

AT&T Staff Alert helps protect employees to summon assistance in threatening situations through an integrated, wearable device

AT&T Cybersecurity serves as a trusted advisor with a holistic approach to securing digital and business transformation

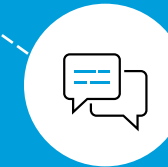
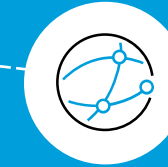
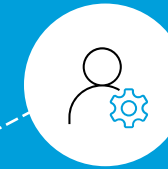
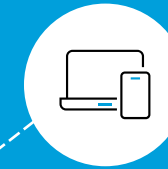
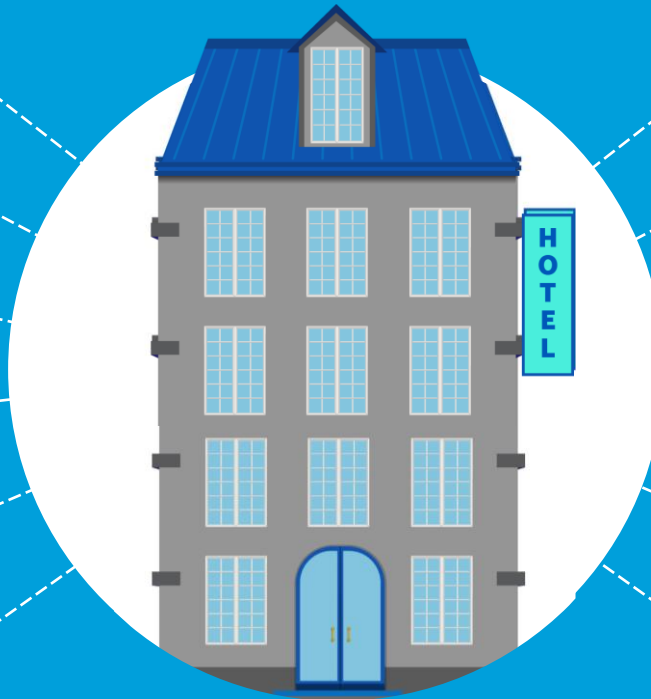
Mobile Application Development and a library of pre-built business apps can help you accelerate your digital transformation



Accelerate digital experience

Modernize your property

Transform the workplace



Enterprise Mobility provides a reliable network and affordable mobility plans to keep you connected and help streamline operations through hosted applications

Bluetooth Beacons are smart beacons that work with Bluetooth to alert staff when customers are close to a particular location

Digital signage/kiosks connect your brand directly to customers with displays featuring videos, images, sounds, and targeted, interactive content

The cost-efficient **AT&T Content Delivery Network (ACDN)** helps quickly distribute content and increase customer satisfaction

Data Patterns™ for Visitors gives you valuable insights into consumer demographics and information about where your visitors live, work, and play

Messaging Toolkit provides SMS, MMS, email and social media, all on a single integrated platform

For more information, contact your AT&T Account Representative.